



John Chubb Instrumentation Ltd  
Unit 30, Lansdown Industrial Estate, Gloucester Road,  
Cheltenham, GL51 8PL, UK. Tel: +44 (0)1242 573347  
Fax: +44 (0)1242 251388 email: jchubb@jci.co.uk

---

# User Manual for JCI-Graph

UM JCI-Graph v2.2.2 September 2007

## *Contents:*

1. Introduction
2. Installation
3. Operation off-line for data stored to a memory card
  - 3.1 Start-up
  - 3.2 File
  - 3.3 Extraction of files
  - 3.4 Select
  - 3.5 Graphical display
  - 3.6 Summary table .csv file
4. Operation online with control and display of charge decay observations
  - 4.1 Start-up
  - 4.2 Serial link up
  - 4.3 Start run
  - 4.4 Graphical display
  - 4.5 Stop run
5. Analysis of results
6. Transfer to other Windows programs

## References

Annex 1: 'Readme' file for JCI-Graph v2.0  
for Windows 95, 98, 2000 and XP

Figures 1 - 8

Example of graph and text presentation

Example of summary table presentation

# User Manual for JCI-Graph

*Windows based software for graphical display of charge decay observations made using JCI 155 instruments. On-line operation and display of operation of JCI 155v5 instruments is also available.*

## 1. Introduction:

JCI-Graph v2.2.2 is Windows based software for the display of graphs, numerical results and test details of corona charge decay and capacitance loading studies made using JCI 155v5 Charge Decay Test Units. Software operation is directly compatible with Windows 95/98/2000/XP.

Special features of JCI-Graph are:

- ability to present up to 4 selected graphs together
- opportunity to scale graphs and select the area and features viewed
- opportunity to copy graphs to other Windows applications, such as wordprocessing, for incorporation into documents along with text details of numerical results and test conditions.
- opportunity to evaluate the ‘capacitance loading’ experienced by charge at the test surface [1,2,3] when charge decay observations are made by JCI 155v5 Charge Decay Test Units in conjunction with JCI 176 measurements of charge transfer to the test surface.
- opportunity to display variation of the rate of charge decay (in terms of the local decay time constant) during the progress of charge decay
- opportunity to start analysis of decay curves from peak voltage or from a set time after the end of corona charging
- creation of Spreadsheet loadable file (.csv) at file extraction giving a summary of all numerical values of test conditions and measurements. This provides an easy way to compare the performance of various samples.
- opportunity to create a Spreadsheet loadable file (.csv) of charge decay observations, calculated local decay time constants and all the data recorded of test conditions.
- opportunity to display variations of local charge decay time constants on linear or quasi-logarithmic axes
- opportunity to extract observations from the memory card mounted in a JCI 155v5 instrument via a serial communications link (or via a USB port using an adaptor)
- opportunity to start and stop tests with JCI 155v5 instruments via a serial communications link. This enables the charge decay observation to be observed remotely in quasi-real time. This is particularly useful when studies are conducted in a controlled environment chamber where access to instrument controls and visibility of the display may be limited.
- opportunity for on-line as well as off-line operation with JCI 155v5 instruments.
- opportunity to display charge decay observations recorded by operation of JCI 155v4 instruments in conjunction with software DECAY18.
- opportunity to display charge decay observations made using Picoscope or Picolog software ([www.picotech.com](http://www.picotech.com)) to store observations made using a JCI 140 Static Monitor in .txt file format.

Charge decay time measurements within JCI-Graph use the same proprietary ‘stutter timing’ method as is used in JCI 155v5 instruments. This method of time measurement very effectively overcomes the influence of noise when working with very low level signals and with very slow charge decay rates. In this approach, as the signal falls below the target level of voltage the timing clock is stopped and is then restarted as it rises back above. Thus as a noisy signal gradually falls through a target voltage level the clock may stop and start many times until the

signal level no longer rises up to the level at which it can restart the clock. Modelling studies have shown this to be an excellent way to find the time at which noisy signals cross set voltage levels. Operation of this stutter timing approach can be seen on charge decay graphs by location of the intersection of end of timing voltage level indication and time markers lines within the range of fluctuation of noisy signals. (This same stutter timing approach is applied in JCI-Graph to analysis of observations made with JCI 155v4 and older instruments using DECAY18 software and with Picoscope or Picolog data recordings).

## **2. Installation**

Installation of JCI-Graph software follows usual Windows operating practice and will usually start automatically after loading the software disc as a floppy to drive a: or on a CD to the CD drive. If loading does not start automatically it may be initiated via the usual Windows route using the 'Start' key and the 'Run' key. Basic operational features are described in the 'Readme' file on the installation disc. This file is also listed in Annex 1.

## **3. Operation off-line for JCI 155v5 test data stored to a memory card**

### 3.1 Start-up

JCI-Graph is started by double clicking the JCI-Graph icon or going via the 'Start' button to 'Programs' and then clicking on the relevant 'JCI-Graph.exe' in the list of programs.

The opening display is shown in Figure 1. The working area can be entered by clicking the left mouse button, or waiting a few seconds, and the screen then shows a bare graph area with a toolbar above. This toolbar (shown in background of Figure 2) provides 5 direct options: File, Display, Serial link, Parameters and Help. The 'Help' facility gives background information about JCI-Graph (including version number) and access to descriptions of all the main operational features of the software, and in a fuller form than is presented in this User Manual.

### 3.2 File

The 'File' select option in the toolbar provides three options: 'Select for display', 'Extract from ATA card' and 'Exit'.

'Extract' is used to transfer the data of tests stored on the memory card from JCI155v5 operation and from this to make files for individual runs (.jc5 files). These are automatically stored within folders related to the serial number of the instrument and the date.

'Select for display' is used to select files for display that have already been extracted from data held on PCMCIA or CompactFlash memory cards, or for getting new data over an RS232 serial communications link (see section 4). For results that have been already been stored to a memory card, by operation of a JCI 155v5 instrument, the initial action is to 'Extract from ATA card'.

### 3.3 'Extraction' of files

Data from operation of JCI 155v5 instruments is stored to the memory card resident in the instrument. Data is stored on the memory card as binary data within a large single file that can hold results for a large number of test runs. This data can be read directly at the instrument by the integral microprocessor, and this gives the opportunity to review any earlier runs on the instrument display in the same way for as just completed runs. It is not in a form that can be directly inspected or read by normally available software.

Data held on the memory card can be read into a PC via a PCMCIA card slot (available in many laptop or Notebook computers) or using a card reader plugged into a USB port. Such card readers are moderately priced and readily available from photographic shops. The same reader may be used with any computer equipped with a USB port. (Note that Sandisk 'Imagemate' software may not be Windows 2000 compatible).

Data transfer is started by clicking the ‘Extract from ATA card’ button within the File menu. The screen display at this point is as illustrated in Figure 2.

To proceed there needs to be identification of two features

- 1) Identification of the ‘source’ via its drive letter. This may be known or will be revealed by a Windows pop-up menu (which can be discarded).
- 2) Identification of the destination folder for the extracted files.

For the first time of use a ‘destination’ directory needs to be created via the ‘Change’ button – and this can also be used if it is appropriate to create a new destination directory at any time for example to store different groups of results. (A name such as ‘JCI-Graph data’ is easily recognisable as a general folder). At subsequent extraction of files the destination directory last used is offered as the default. The destination folder is a general folder. The act of ‘Extraction’ creates and puts the extracted files into appropriate instrument and date folders within this general folder.

The first action of extraction is to transfer the data file from the source card. Progress is shown on a bargraph display. Advice is then offered to make a ‘back-up’ copy of the extracted data. Opportunity is provided, following this, to select the data to be extracted in terms of instrument serial number, date and start run number.

Results from individual test runs are now stored at the selected location as individual files (with the extension .jc5) by ‘run number’ within directories (folders) for each day of operation and within directories (folders) identified by each instrument serial number. Results from individual runs are hence uniquely stored, even if one memory card has been used on several instruments.

*Note: The .dat file held on the memory card and the .jc5 files created at Extraction are not directly useable. Opportunity is provided when individual graphs of JCI 155v5 data are displayed to create a .csv file that includes all the data describing that test run, and this is then directly loadable into a Spreadsheet for numerical analysis and/or graphical display.*

A ‘summary.csv’ file is generated at the time of file extraction that includes details of all the main test conditions and results. This is placed into the same directory (folder) as the data files. This summary file can be directly loaded into a Spreadsheet such as Excel.

The date and time values stored in the data files are derived from the calendar clock in the JCI 155v5 instrument. Operation of this clock is maintained by a long life battery. The instrument serial number is incorporated into the microprocessor software data that is set up at time of manufacture and so cannot be changed. These features ensure uniqueness of data file information.

The above ‘Extraction from an ATA card’ can also take place from the memory card, albeit rather slowly, while the card is still in an instrument. This achieved via an RS232 serial communications link, as described in Section 4.2.

### 3.4 ‘Select’

Clicking on the ‘Select for display’ option provides 4 choices:

- ‘JCI 155v5 files’
- ‘JCI 155v5 via serial link’
- ‘JCI 155v4 files’
- ‘Pico files’

Select ‘JCI 155 v5 files’ to access existing v5 files already extracted or ‘JCI 155v5 via serial link’ for direct on line operation of JCI 155v5 instruments. Selection of ‘JCI 155v4 files’ or ‘Pico files’ (in .txt format) provides direct access to these files, but does not create any JCI 155v5 equivalent files. The nest of directories shown will reflect the folder from which data was

last selected and displayed. Alternative dates, instruments and general folders may be selected by clicking the appropriate higher folder levels and then moving down to the location required.

From the folder of the serial number of the instrument used the date on which the tests were made can be selected. This will show a listing of the files available. Individual files may be selected and displayed in any order by double clicking the mouse pointer. Up to four files may be displayed at a time for display. The screen display is illustrated in Figure 3.

With 'Pico files' there can be two channels of data recorded, channel A and channel B. Opportunity is provided to display either or both these channels by selecting the .txtA or .txtB version of the source file.

### 3.5 Graphical display

As each file is selected for graphical display, by double clicking it in its menu list, a graph will be shown of the variation of surface voltage versus time for the full range of these parameters measured. This is illustrated in Figure 3. Surface voltage values relate to the left hand vertical axis of the graph and the horizontal axis is time. The maximum values for the axes will be adjusted automatically to accommodate the maximum values of all the graphs being displayed. Portions of the graphs may be selectively displayed by clicking the left-hand mouse button on the top left hand corner of the area, moving to the bottom right hand corner and the releasing the button. The area being selected is greyed to show its extent. This expansion may be pursued sequentially and may be applied from the origin or over any part of the area displayed. The full view may be restored via the 'Display' menu item.

One or more graphs may be removed from the display after inspection or use by clicking the file identity in the list of 'Displayed files' and clicking the 'Hide' button below. Graphs may be included from other directories.

The graphs presented include a display of the values of local charge decay time constants during the progress of each charge decay. These graphs are a set of short horizontal straight lines giving the average local time constant over the corresponding short periods of each decay curve. They relate to the right hand 'time constant' axis.

The identity of the active files selected is shown at the bottom of the graph display. Clicking on one of these brings up an alphanumeric summary of run test conditions ('File parameters') and numerical values of measurement results. This is shown in Figure 3. With Picoscope and Picolog sourced data the 'Run settings' area will be blank.

The 'File parameter' display panel provides opportunity to enter an alphanumeric 'Description' for that particular test run. When this description is added it will also appear in the text information that may be printed out to accompany graphs and is entered into the .csv 'results summary' file. The 'description' last used is stored and is made directly available for acceptance or editing for subsequent test runs. Acceptance can be by clicking the accept key or hitting Return. Details from other sources can of course also be copied into the 'Description' box using <CTRL> C to copy the details to the clipboard and then <CTRL> V to paste to the desired location.

This 'File parameters' panel also provides opportunity to make the whole set of data describing the test to be made available as a .csv file by clicking the 'Make CSV' button in the File parameters box.

The 'zero' voltage of graphs may be adjusted in the 'File parameters' window to take account of any offset thought to be present. The default 'zero shift' voltage is zero.

With observations recorded into .txt files using Picoscope or Picolog software then JCI-Graph finds the last highest peak voltage and puts this at time zero. The graph shows the variation of surface voltage for the 1s preceding the peak and it assumes for analysis that the pre-event surface voltage was close to zero. It may well be found that this surface voltage reading before the start of the event of interest has a zero offset. This can be compensated in the File parameters window before clicking 'Apply'. Voltage values displayed are interpreted as surface voltages as

observed by a JCI 140 at 100mm on the 2kV FSD range – i.e. 1V of surface potential gives 1mV signal output.

The graphical presentation may be modified via the ‘Parameters’ key on the toolbar and then either the Analysis or Display options. The ‘Analysis’ option provides the option to measure decay times to a chosen end % of the initial peak voltage in addition to the 1/e value built into all analyses. Charge decay measurements may be set to start either at the peak of the initial voltage or a selected time after the end of the corona period. Experimental comparison between charge decay and capacitance loading results based on corona charging and tribocharging show [4] that a time of about 100ms after the end of corona charging is the most appropriate time to start analysis. This is because it takes at least this time for surfaces to separate in manual charging actions and for surface charges to provide and influence nearby.

The form of the decay curve is conveniently shown via the display of local decay time constant values. Values are shown relative to the right hand axis on the graphical display. The percentage change of surface voltage over which the local decay time constant values are calculated can be set via the ‘Parameters’ key in the main display and then via ‘Analysis parameters’. The axis used for the display of values may be set via the ‘Parameters’ key and the ‘Display parameters’.

When the program starts the source data is subject to no suppression of single data point spikes. The option is provided to provide suppression of single or multiple spikes to overcome the influence of minor glitches that may arise in the data stream. The ‘Display parameters’ option provides opportunity to change colour and thickness of the graphical lines and whether graticule and analysis lines are shown for both the ‘time’ and ‘surface voltage’ axes. These are implemented when the ‘Apply’ button is clicked.

### 3.6 Summary table .csv file

As JCI 155v5 data files are extracted a .csv file is automatically created that summarises all the important features of the test conditions and results for each individual test. (No summary file is created when handling data from DECAY18 or Pico files). This .csv file may be opened into a Spreadsheet (such as Excel) where it may be rearranged, if desired, to be suitable for transfer into a document or a test report. An example summary file, in Excel format, is appended. An explanation of the column headings in the summary table is listed in Annex 2.

Where changes are made to the sample ‘Description’ or the % value for the second end point of timing these changes are shown in subsequent presentations of the .csv file.

Where JCI 155v5 studies are made in conjunction with charge measurements using a JCI 176 Charge Measuring Sample Support [1,2,3] the observations of ‘induction’ and ‘conduction’ charge components are stored to the memory card along with the charge decay observations. These values are ‘extracted’ and the values are included within the .csv file. Preparation of the results summary file also includes calculation of the total charge received by the sample using the induction charge signal as modified by an appropriate factor before adding to the conduction charge signal. The default factor used is 2.2. A calculation is also made of the ‘capacitance loading’ experienced by charge on the test surface [1,2,3]. The factors used in these calculations can be edited on the Spreadsheet and then copied through the appropriate columns of numbers.

## **4. Operation online with control and display of charge decay observations**

### 4.1 Start-up

JCI-Graph is started by double clicking the JCI-Graph icon or going via the ‘Start’ button to ‘Programs’ and then clicking on the relevant ‘JCI-Graph.exe’ in the list of programs.

The opening display is shown in Figure 1. This can be ended by clicking the left mouse button, or waiting a few seconds, and the screen then shows a bare graph area with a toolbar above. This toolbar provides 5 direct options: File, Display, Serial link, Parameters and Help. The ‘Help’ facility gives background information about JCI-Graph (including version number)

and access to descriptions of all the main operational features of the software, and in a fuller form than is presented in this User Manual.

Clicking on the ‘Select’ option provides (as shown in Figure 4) 3 options for the ‘Source’ of data to display on the ‘Select for display’ box:

- ‘JCI 155v5 files’
- ‘JCI 155v5 via serial link’
- ‘JCI 155v4 files’
- ‘Pico files’

Select ‘JCI 155 v5 via serial link’ for on-line operation.

Check that the serial link cable is in place from the serial port (COM1) on the computer to the right hand 8w mini DIN connector on the JCI 155v5. Many new computers, notably Laptop computers, are not provided with RS232 serial data ports. On-line operation of JCI-Graph can be achieved on such computers by using a USB to serial adapter – e.g. Belkin Serial Adapter F5U103. This adapter is plugged into a USB port and connected to the JCI 155v5 with the 9w D type to 8w mini DIN cable supplied by JCI.

During serial link operation data is both stored to the memory card to directly into files on the linked computer. However, it is necessary for a memory card to be present in the JCI 155v5 for communications to be established.

*Note: Do not try to use any serial extension cable to the cable provided as this may cause problems from transposition of functions between pin positions. If an extension cable must be used a ribbon cable is suggested to ensure no transpositions.*

#### 4.2 Serial link up

When ‘JCI 155v5 via serial link’ is clicked as the ‘Source’ a ‘Destination’ menu appears as shown in Figure 4. This allows selection of the drive and the folder to which data will be stored – or creation of a new folder. The folder previously used is remembered – but an alternative may be selected as desired.

*Note: It is suggested it will prove useful to use separate folders to hold data files rather than in with the source .exe program.*

#### 4.3 Start Run

Check that the JCI 155v5 instrument is serial linked and switched on, has suitable test conditions selected on the instrument and has a sample ready in position. If the JCI 155v5 is being operated by a mains supply then its operation will be switched on by the ‘Start run’ request.

When ready, click the ‘Start run’ key at the bottom left hand corner of the ‘Select for display’ box. The box over the graph display advises on the status of the serial communications link and the progress of preparations for a test run. This condition is illustrated in Figure 5. When the run has started a bargraph appears advising on how long it will be before the graphical display appears. This indication is desirable because it is not possible for the JCI 155v5 instrument to start transferring run data until after completion of the initial fast data recording phase that lasts 2 seconds.

The data transferred during a run is stored in .jc5 files in just the same way as when data is extracted from a memory card.

A test run may be stopped by clicking the ‘Stop run’ button if this is not greyed out or via the ‘Serial link’ menu option. The progress of a test run may be paused or stopped according to values set in the ‘Transfer parameters’ menu within the ‘Parameters’ menu.

#### 4.4 Serial link file extraction

Files may be extracted from a memory card while still in an instrument. This is selected by clicking the 'Serial link' as the Source as opposed to 'Drive'. It is worth noting that this is a much slower route for data transfer, but may be appropriate for a few files and in particular situations.

#### 4.5 Graphical display

The graphical display shows the progress of decay of surface voltage and the calculated values of local decay time constant values. As the display reaches the right hand edge of the display the time axis expands by a factor of two, so one has a stationary display of decay progress for visual inspection. As for the display of previously recorded data up to 4 graphs may be shown together and parts of the display may be selected for detailed inspection. Where part of the display is selected this remains stationary while data continues to accumulate in the background. Text details of test conditions and results available so far can be accessed by clicking the run number below the graph to show the 'File parameters' display. This will include measurements of the quantity of charge transferred and the calculated value of the 'capacitance loading'.

The graphical display can be handled in just the same way as for graphs obtained from stored data, and as described in Sections 3.4 and 3.5 above.

#### 4.6 Stop run

A test run may be stopped by clicking the 'Stop run' button at the lower left hand side of the 'Select for display' menu box if this is not greyed out or via the 'Serial link' menu option. This will stop operation of the JCI 155v5 with storage of all results to the memory card and to the selected folder.

### **5. Analysis of results**

The main outcome from operation of JCI-Graph is the graphs of the charge decay curves and the numerical values for the decay times to  $1/e$ , to a selected % and for the capacitance loading.

Experience from manual tribocharging studies [4] indicates that it takes about 100ms after the end of charging for the rubbing surfaces to separate and for the surface voltage to reach a peak value. In the light of this it is appropriate to use a similar time after the end of corona charging for selecting the initial voltage on which analysis of decay curves is based. The form of decay curves before this time may well still be of interest but is not directly relevant to using corona studies to predict the performance of materials in practice [5,6].

Options are provided via the 'analysis' menu section for starting decay time analysis at the initial peak of surface voltage or at a set time after the end of corona charging. The inherent mechanical time in the JCI 155v5 for the observed surface voltage to reach a peak is about 20ms. If the delay is set to something less than this (say 10ms) then decay time measurements are made from the peak initial voltage. Decay time analysis always includes measurement of the decay time to  $1/e$  of the chosen initial voltage. The 'analysis section enables a second % end point level to be selected – and a value of 10% is set as the default

The graphical display may be adjusted in various ways to best show features of interest. It has been noted that the variation of local decay time constants provides a good way to compare decay curves between materials and for different test conditions. (The 'local decay time constant' reflects the rate of decay per unit of surface voltage at that time. It is derived as the time constant for the best fit exponential curve for each small segment of the decay curve). It has been observed in a number of studies that local decay time constant values increase linearly with time during the progress of charge decay – after a short initial settling down period [4]. If this is generally true (or for the materials of interest) it provides opportunity for materials with inconveniently long decay times to predict the time to achieve certain end points from studies over modest test periods. The percentage change of surface voltage over which the local decay time constant values are calculated can be set via the 'Parameters' key in the main display and

then via 'Analysis parameters'. A small % step will give more detail in the form of the variation but a greater susceptibility to noise. The numerical values of calculated local decay time constants (and displayed on the graphs) can be accessed in the .csv file that can be created by clicking the 'Make .csv' key in the 'File parameters' box. The axis for graphical display of local time constant values (right hand axis) may be selected to be quasi-logarithmic or linear via the 'Parameters' and 'Display parameters' menu boxes from the main graph. This is illustrated in Figure 8.

## 6. Transfer to other Windows programs:

The graphs and text boxes of numerical decay details can be copied individually to Windows programs - such as wordprocessing programs. This is implemented via the 'Display' and 'Copy to document' buttons.

If graphs are to be used at an appreciably larger or smaller scale than displayed by JCI-Graph it is best to change the display from full screen to a tile display and then adjust the size of the graph (by dragging a corner) to be close to the required application size. This ensures that the thickness of lines and scale divisions will be appropriate to the application size used.

To copy a display to, for example, a wordprocessing document:

- open the document or target area of the document
- in JCI-Graph click 'Display' and then 'Copy to document'.
- go to the target area in the target document and click 'Paste' in the edit menu. This will transfer a copy of the graph.
- return to JCI-Graph and click the 'OK' in the Graph instruction box.
- return to the document and click 'Paste' to paste in the text information. This will transfer and display all the text information for each of the graphs displayed.
- return to JCI-Graph and click the OK button in the Text instruction box.

Adjustments for size and layout may then be made to match the application by dragging and scaling. Text information may be edited after copying – but not the content of the graph.

Up to 4 graphs may be displayed together on a single graph. A convenient presentation in a report is to have the graph and all the associated text details on a single A4 sheet. Depending on margins this can be achieved by setting a target page to be double column, 5mm gutter with 10 point printing and then a) copying the graph (possibly at a slightly reduced size) to the top of the page, followed by b) copying the text information. This is illustrated in the example appended.

## References:

- [1] J. N. Chubb "*New approaches for testing materials*" J. Electrostatics 54 March 2002 p233. Proceedings ESA Annual meeting, Brock University, Niagara Falls, June 18-21, 2000  
(This paper is available on the JCI Website at <http://www.jci.co.uk/Papers/ESA-MaterialTesting.pdf>)
- [2] J. N. Chubb "*Measurement of tribo and corona charging features of materials for assessment of risks from static electricity*" IEEE Trans. Ind. Appl. 36 (6) Nov/Dec 2000 p1515-1522. Presented at IEEE-IAS Meeting, Phoenix, Arizona, Oct 1999  
(This paper and copies of the overhead transparencies used are available on the JCI Website at <http://www.jci.co.uk>)
- [3] "*Method to test the electrostatic suitability of materials*" Document considered by British Standards GEL101 to progress towards becoming a British Standard, July 2004 (Available on JCI Website via: [www.jci.co.uk/List.html](http://www.jci.co.uk/List.html))
- [4] J. N. Chubb "*Experimental comparison of the electrostatic performance of materials with tribocharging and with corona charging*" (Available on JCI Website via: [www.jci.co.uk/List.html](http://www.jci.co.uk/List.html))
- [5] "*Method for testing the electrostatic suitability of materials*" Draft prepared for British Standards GEL101 committee. (On JCI Website at: <http://www.jci.co.uk/cache/JCITestMethod.pdf>)
- [6] J N Chubb "*A Standard proposed for assessing the electrostatic suitability of materials*" J. Electrostatics 65 2007 p607-610

Annex 1:

**'Readme' file for JCI-Graph version 2.0  
for Windows 95, 98, 2000 & XP**

Copyright (c) 2001 John Chubb Instrumentation

Thank you for choosing JCI-Graph. This Readme file holds important information on using the software.

**CONTENTS**

1. Description of this version of JCI-Graph
2. Installing JCI-Graph
3. Getting started with JCI-Graph
4. On-line Help System for JCI-Graph
5. Contacting John Chubb Instrumentation

-----  
**1. Description of this version of JCI-Graph**

JCI-Graph enables charge decay observations recorded from the operation of a JCI 155 instrument to be processed and graphed. Version 1.0 deals with data from JCI 155 instruments up to Version 4. Data can be read from disc files (eg floppy disc or hard disc). Version 2.0 deals with data both from JCI 155v4 and JCI 155v5 instruments.

-----  
**2. Installing JCI-Graph**

Insert the JCI-Graph installation disc into your computer and run "setup". This can be done by clicking on the "Start" button, then "Run". On the Run window, click "Browse". On the Browse window, ensure "look in" refers to the drive containing the installation disc and then select "setup.exe". Back on the Run window, click "OK" to run "setup.exe".

The installation process should not take long. You will be asked to accept the licensing agreement and to enter identification. You can also select installation locations, although it is anticipated that most will accept the normal locations indicated as default.

### **3. Getting started with JCI-Graph**

After installation, JCI-Graph can be run by clicking on the "Start" button, then "Programs", then "JCI-Graph".

A welcome screen is displayed for a short period: this can be removed by clicking the left mouse button.

In the main display form, files can be selected for display by clicking on the "select" option after either (a) clicking on "File" in the menu bar at the top of the window or (b) clicking the right mouse button.

A range of subsidiary forms can be used to control the operation of JCI-Graph. Up to four files can be displayed at a time. The display can be adjusted, for example to focus on a small part of the current graphs. User analysis can be performed to check specific decay characteristics. The current display can be copied for insertion into a word-processor document.

Details on using JCI-Graph are available in the On-line Help System (see below).

-----

### **4. On-line Help System for JCI-Graph**

The On-line Help System can be obtained as follows :-  
In the main display form, click on "Help" in the menu bar at the top of the window, which causes a drop-down menu to appear. Move the mouse pointer into this help menu and click on the "Help Topics" option.

The On-line Help System starts by indicating its contents. The system is divided into screens of information which are linked to each other. Where further information is available for a particular topic, the topic is displayed as a "link" in a distinctive colour (eg green, although this depends on your system). If you want to view information on that topic, move the mouse pointer onto the link and click the left mouse button. In this way, you can follow through information on a series of related topics. If you want to review one of the previous screens of information, click on the "back" button at the top of the help window.

The On-line Help System provides further information on how to use help.

-----

## 5. Contacting John Chubb Instrumentation

We would welcome your comments on this software.

If you have any problems using this software,  
please check :-

- (a) information given in this Readme file and
- (b) guidance given in the On-line Help System.

If you cannot resolve your problem, please make a note of  
the circumstances (in particular, any error message).

John Chubb Instrumentation can be contacted as follows :-

Telephone: +44 (0)1242 573347

Fax: +44 (0)1242 251388

Email: [jchubb@jci.co.uk](mailto:jchubb@jci.co.uk)

Web: <http://www.jci.co.uk>

**Annex 2: Column headings in summary table created by JCI-Graph**

Run	The number allocated in sequence for this JCI 155v5 instrument
Description	A description of the material tested – can be entered in JCI-Graph
Time	Time of test run: hours, minutes, seconds (from instrument clock)
Vc	Corona voltage (volts)
tc(s)	Duration of corona (s)
Vstart	The initial surface voltage (volts) at which analysis starts
t pk to 1/e	Time to 1/e of initial peak voltage (s) – if this level reached
t pk to %	Time to selected % of initial peak voltage (s) – if this level reached
%	Selected % of initial peak voltage
Q(nC)	Quantity of corona charge transferred (nC)
CL	Capacitance loading
T(C)	Temperature measured within JCI 155v5
RH(%)	Relative humidity measured within JCI 155v5
Serial	Serial number of JCI 155v5 instrument
Date	Date of testing
CondQ(nC)	Quantity of ‘conduction’ charge measured by JCI 176 – if connected
IndQ(nC)	Quantity of ‘induction’ charge measured by JCI 176 – if connected
Pre(V)	Surface voltage on sample surface before start of test run
V peak	The initial peak voltage
t delay (s)	The time delay between the end of charging and the start of decay time analysis

**Note:** If JCI 176 is not connected then no charge is measured and Q(nC), CL, CondQ(nC) and IndQ(nC) are all zero. If the quantity of charge received by the JCI 176 is larger than measurement capability it is shown as #####

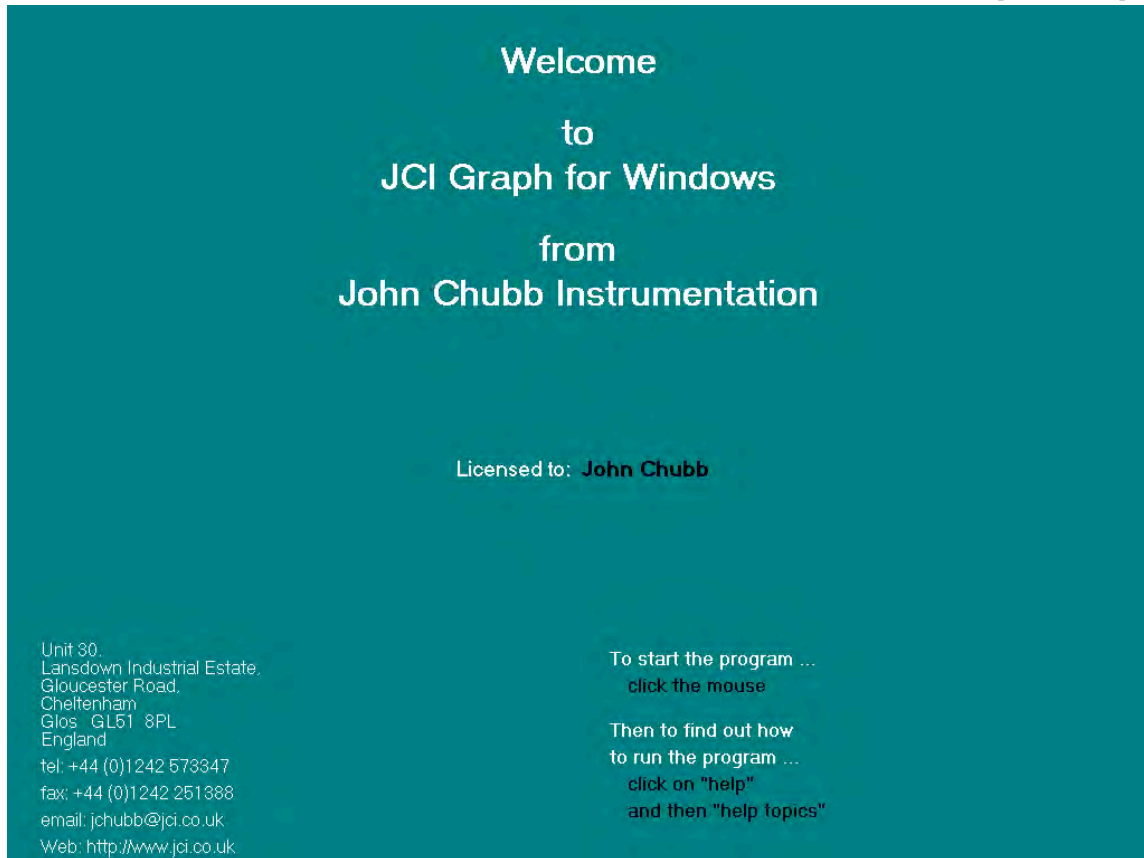


Figure 1: Opening display

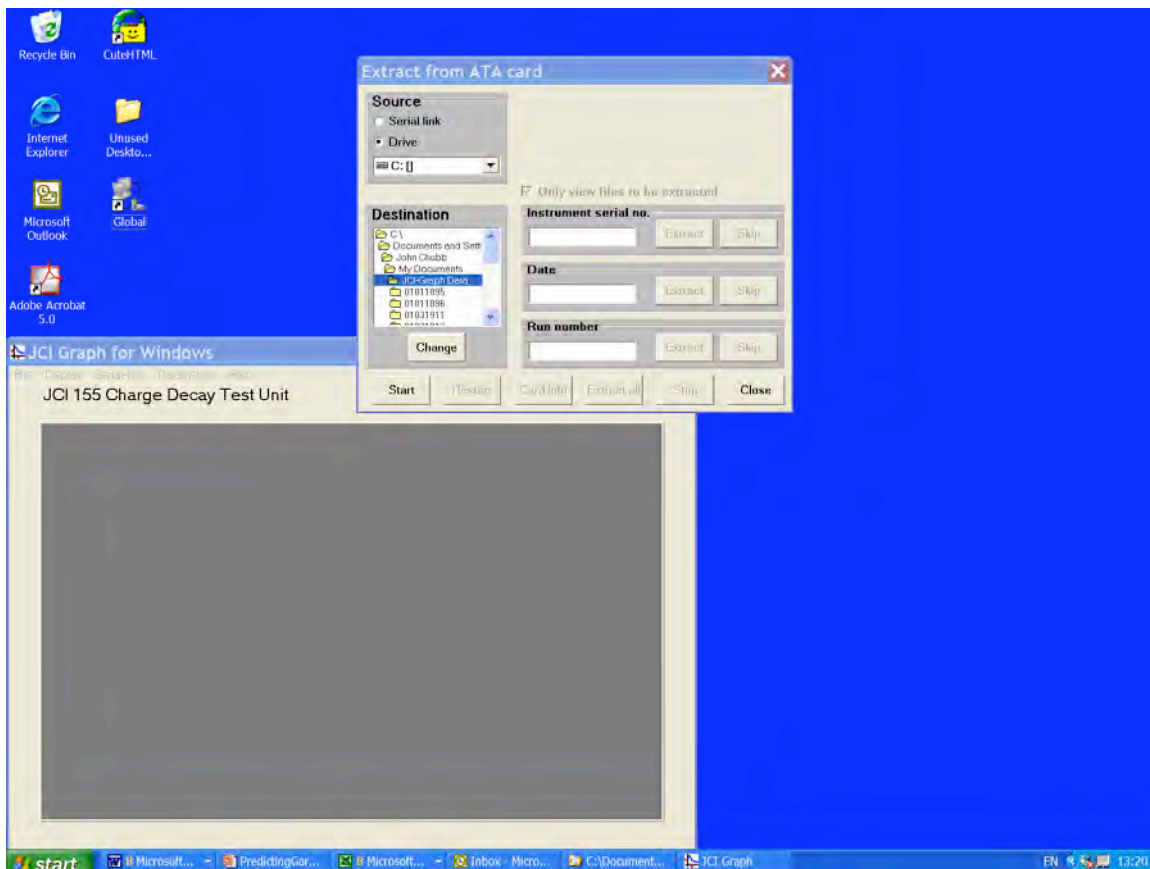


Figure 2: Ready to extract data from memory card in drive d: to folder 'JCI-Graph Data' in c:

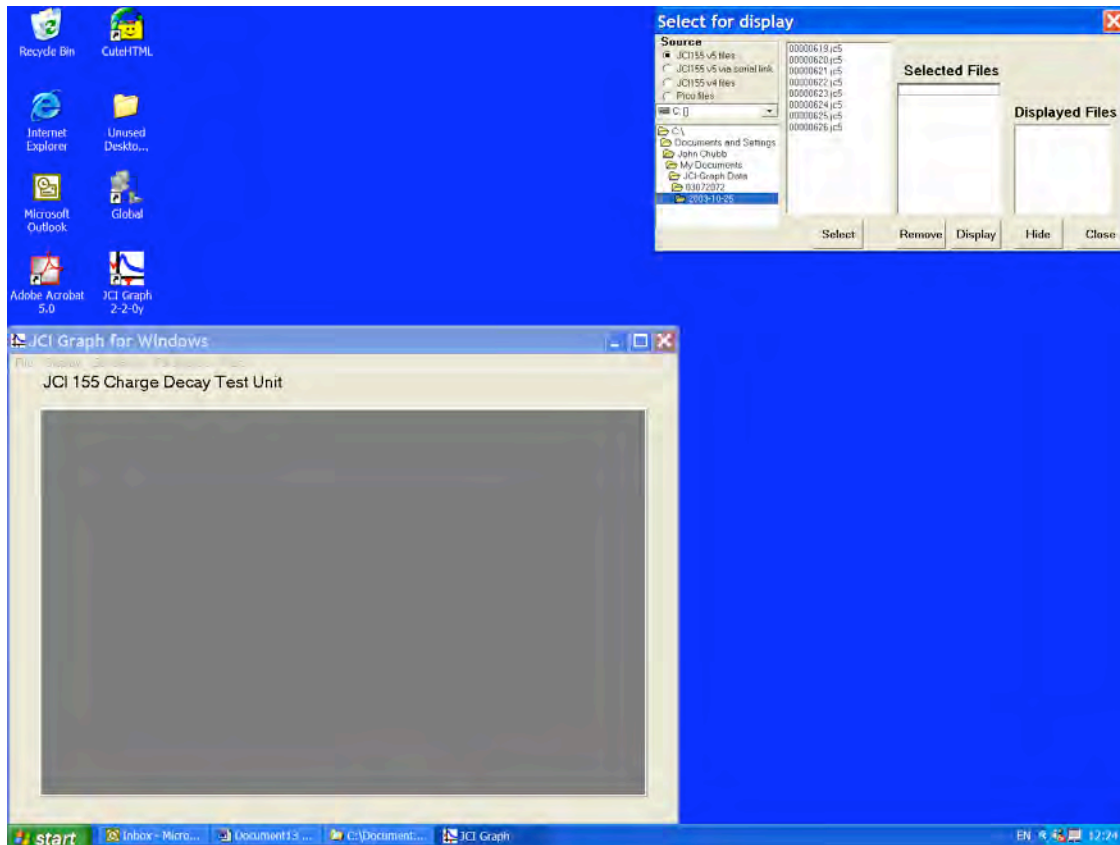


Figure 3: Display showing 'Select for display' of JCI 155v5 files with source options

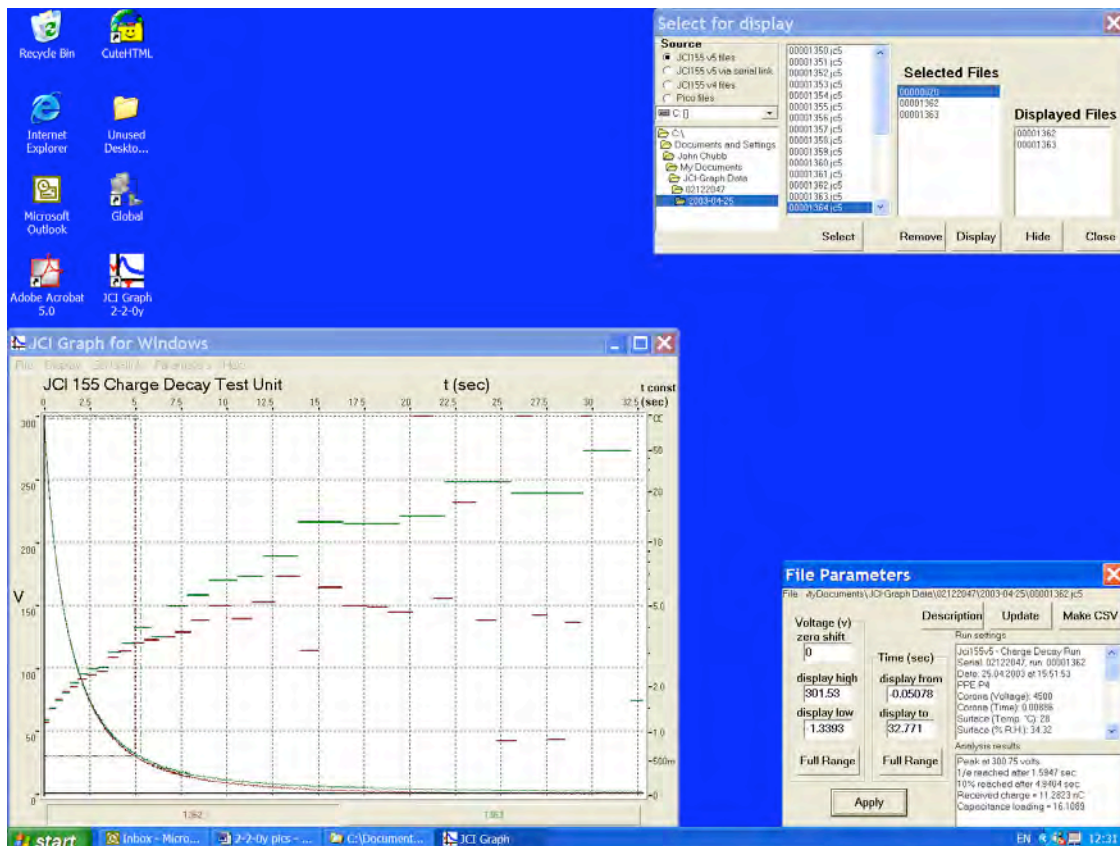


Figure 4: Display showing graphs for two selected files with File Parameter information. The graphs show both the decay of surface voltage (left hand axis) and the variation of local decay time constant during the progress of each decay (right hand time axis)

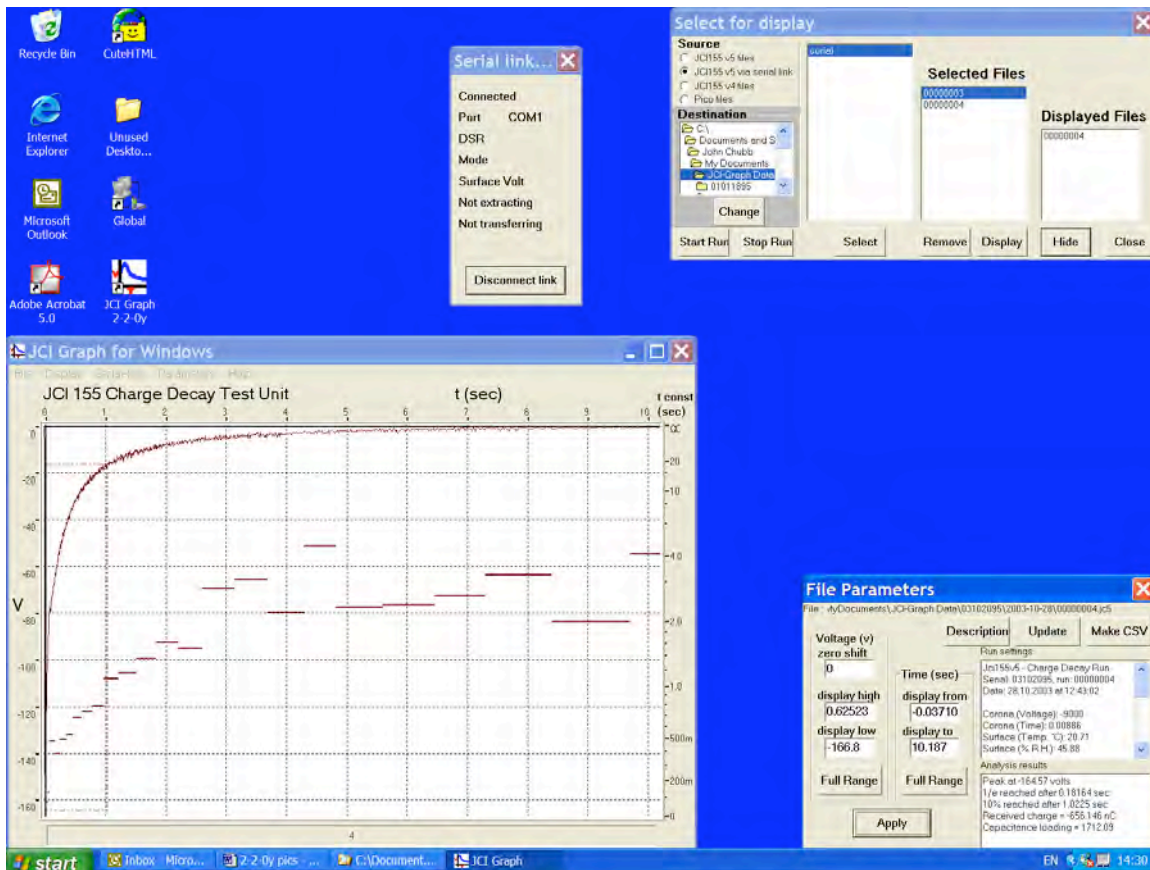


Figure 5: Display showing selection of JCI 155v5 instrument via serial link and connection ready to run

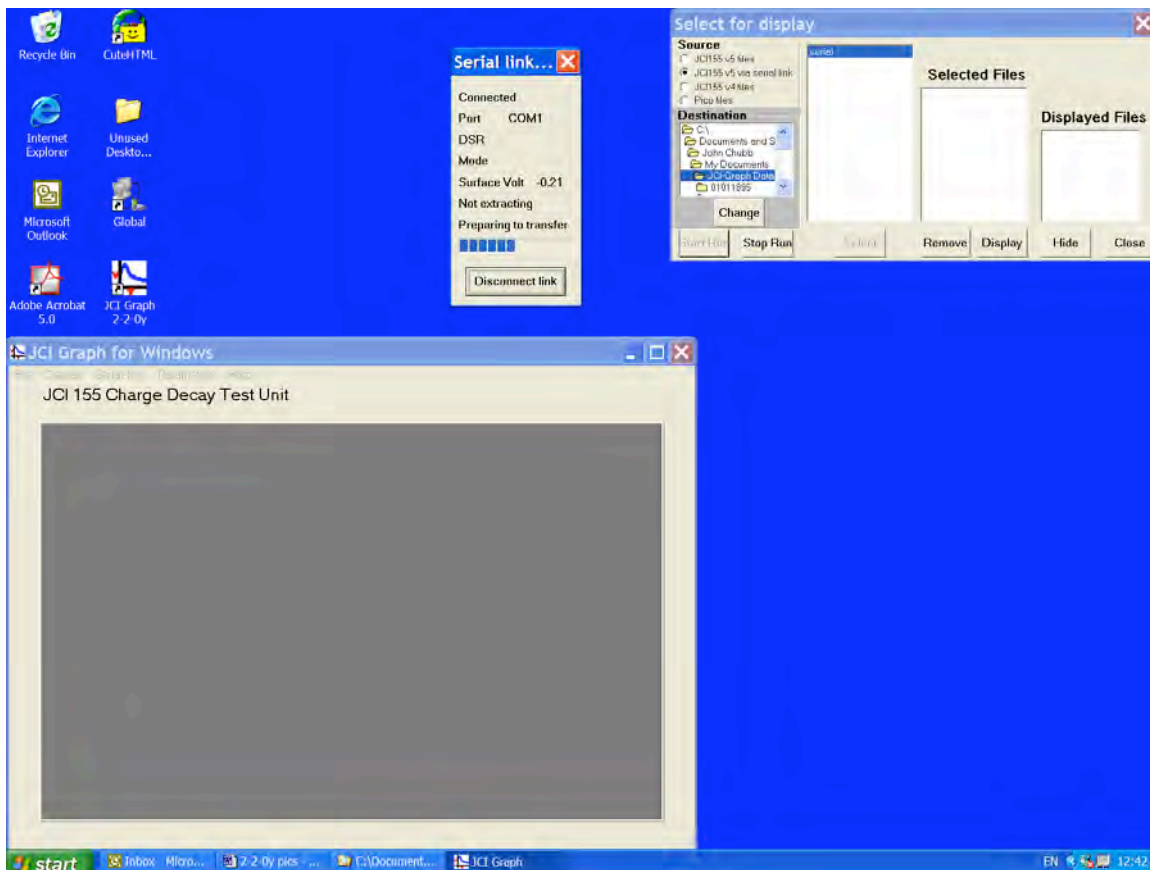


Figure 6: Display showing serial connection status after clicking 'Start run'

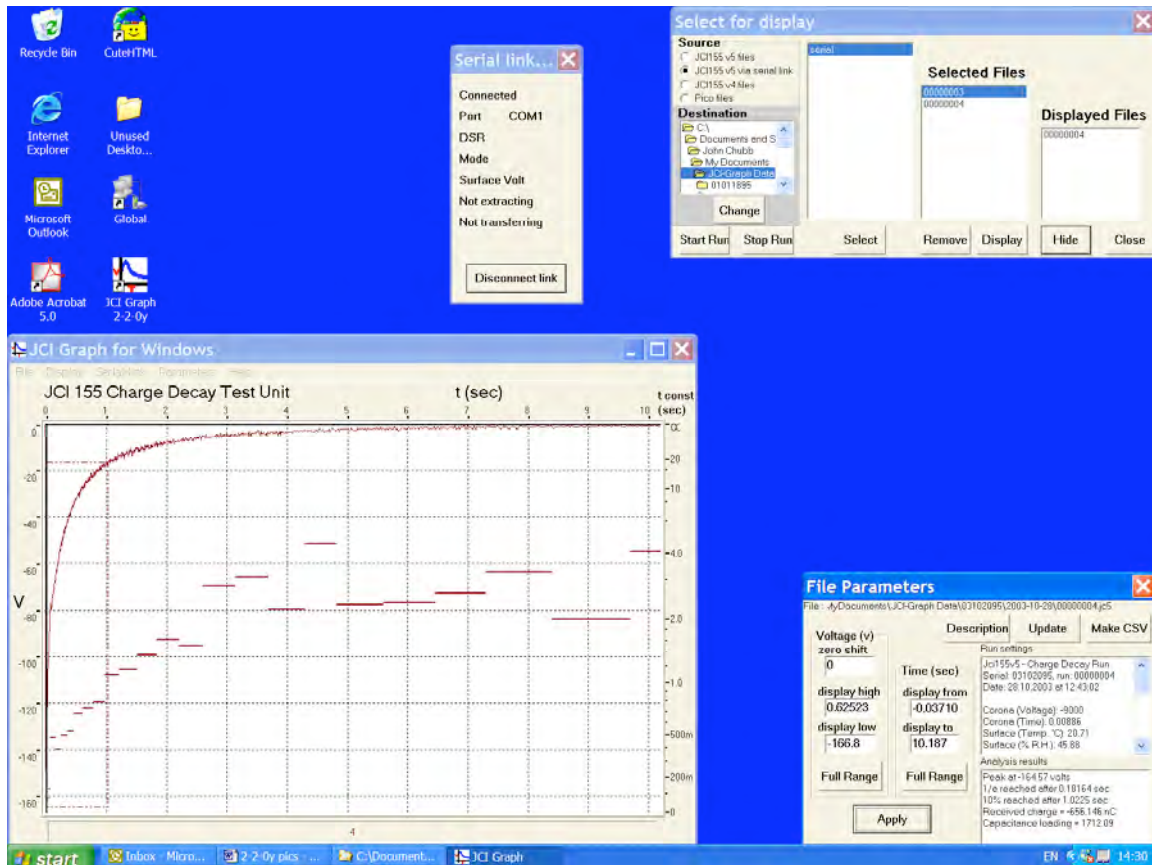


Figure 7: Display of charge decay curve from on-line test

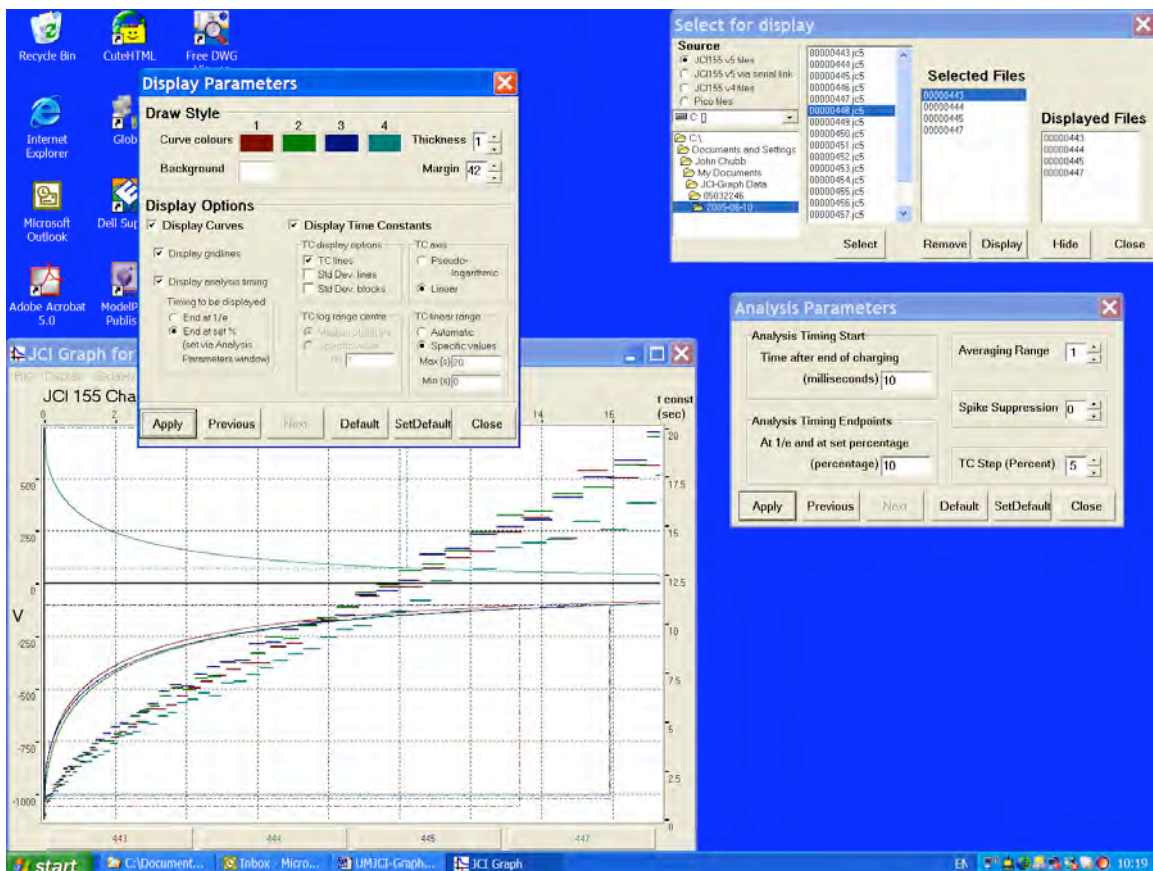
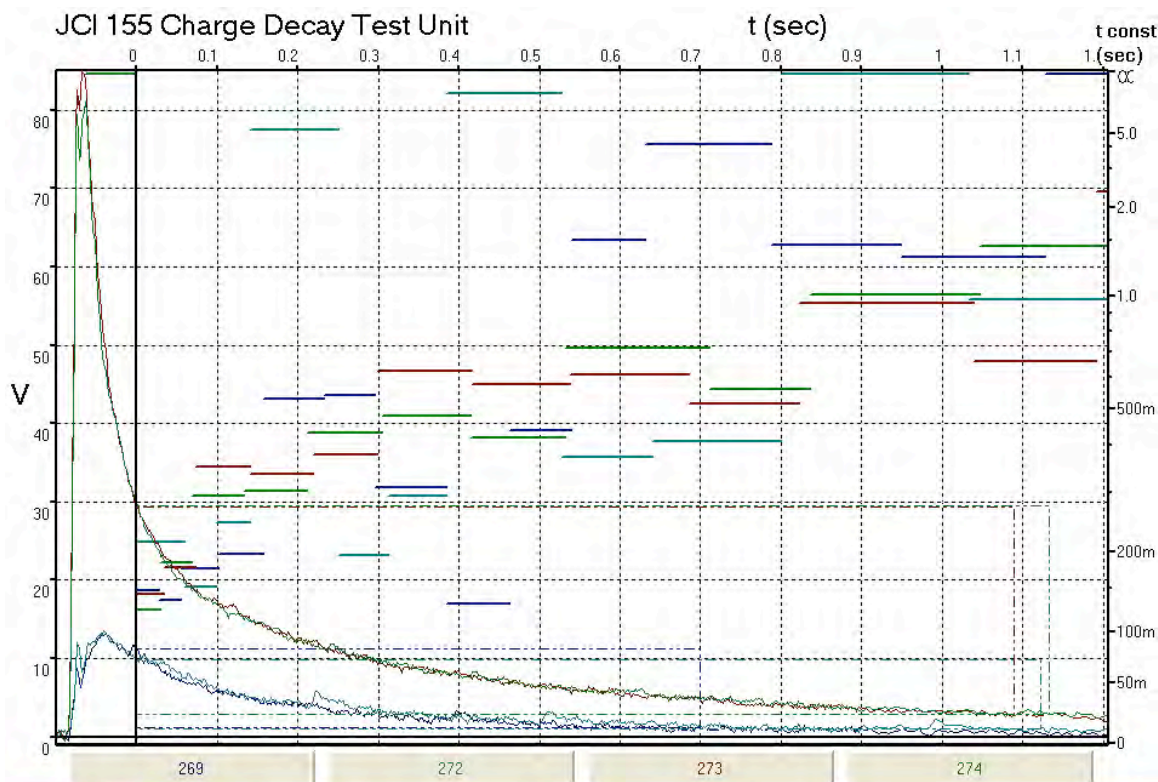


Figure 8: Settings of 'Analysis parameters' and 'Display parameters' for linear graphical display of local decay time constants



1 : MyDocuments\JCI-Graph Data\04092193\2004-10-14\00000269.jc5

Copy paper  
 Serial: 04092193, run: 00000269  
 Date: 14.10.2004 at 14:35:31  
 Corona (Voltage): -3000  
 Corona (Time): 0.01  
 Surface (Temp. °C): 22.78  
 Surface (% R.H.): 58.56  
 Pretest (Voltage): 0.45  
 Peak at 13.06 volts  
 Analysis start 0.1 secs after charging  
 at 11.253 volts  
 1/e reached after 0.19785 sec  
 10% reached after 0.6998 sec  
 Received charge = 1.05673 nC  
 Capacitance loading = 34.7462

2 : MyDocuments\JCI-Graph Data\04092193\2004-10-14\00000272.jc5

Copy paper  
 Serial: 04092193, run: 00000272  
 Date: 14.10.2004 at 14:37:15  
 Corona (Voltage): -3000  
 Corona (Time): 0.01  
 Surface (Temp. °C): 22.8  
 Surface (% R.H.): 58.35  
 Pretest (Voltage): 0.81  
 Peak at 13.273 volts  
 Analysis start 0.1 secs after charging  
 at 9.9037 volts  
 1/e reached after 0.28965 sec  
 10% reached after 1.1227 sec  
 Received charge = 1.14171 nC  
 Capacitance loading = 36.9372

3 : MyDocuments\JCI-Graph Data\04092193\2004-10-14\00000273.jc5

Copy paper  
 Serial: 04092193, run: 00000273  
 Date: 14.10.2004 at 14:39:22  
 Corona (Voltage): -10000  
 Corona (Time): 0.01  
 Surface (Temp. °C): 22.8  
 Surface (% R.H.): 58.38  
 Pretest (Voltage): 0.89  
 Peak at 83.99 volts  
 Analysis start 0.1 secs after charging  
 at 29.406 volts  
 1/e reached after 0.25254 sec  
 10% reached after 1.0895 sec  
 Received charge = 150.218 nC  
 Capacitance loading = 768.006

4 : MyDocuments\JCI-Graph Data\04092193\2004-10-14\00000274.jc5

Copy paper  
 Serial: 04092193, run: 00000274  
 Date: 14.10.2004 at 14:40:06  
 Corona (Voltage): -10000  
 Corona (Time): 0.01  
 Surface (Temp. °C): 22.8  
 Surface (% R.H.): 58.08  
 Pretest (Voltage): 0.45  
 Peak at 79.846 volts  
 Analysis start 0.1 secs after charging  
 at 29.578 volts  
 1/e reached after 0.25645 sec  
 10% reached after 1.1324 sec  
 Received charge = 149.583 nC  
 Capacitance loading = 804.457

**Summary of decay observations made by a JCI155v5 instrument**

Factors used in charge and capacitance loading formulae

Induction charge factor    2.2  
 Voltage sensitivity factor    0.73  
 Capacitance loading factor    1.7

Formula for Q(nC)    #####  
 Formula for CL    #DIV/0!

C:\Documents and Settings\John Chubb\My Documents\JCI-Graph Data\04092193\2004-10-14

Run	Description	Time	Vc	tc(s)	V start	t to 1/e	t to %	%	Q(nC)	CL	T(C)	RH (%)	Serial	Date	CondQ (nC)	IndQ (nC)	Pre (V)	Vpk	t delay (s)
269	Copy paper	14:35:31	-3000	0.01	11.3	0.198	0.700	10	1.1	34.7	22.8	58.6	4092193	14.10.2004	1.057		0.45	13.1	0.1
272	Copy paper	14:37:15	-3000	0.01	9.9	0.290	1.123	10	1.1	36.9	22.8	58.4	4092193	14.10.2004	1.139	0.001	0.81	13.3	0.1
273	Copy paper	14:39:22	-10000	0.01	29.4	0.253	1.089	10	150.2	768.0	22.8	58.4	4092193	14.10.2004	150.128	0.041	0.89	84.0	0.1
274	Copy paper	14:40:06	-10000	0.01	29.6	0.256	1.132	10	149.6	804.5	22.8	58.1	4092193	14.10.2004	149.495	0.040	0.45	79.8	0.1

(See Annex 2 for explanation of column headings)